

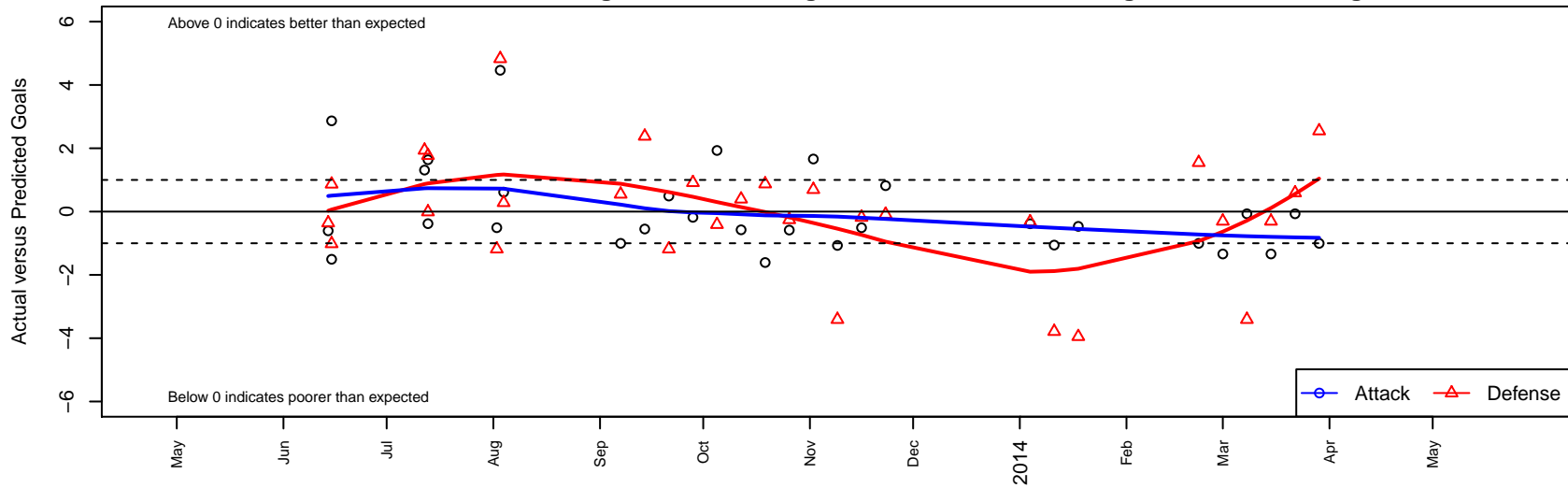
# Seattle United NE White G00

Seattle United Regional  
 Seattle, WA  
 G00 total strength=485  
 attack=0.42 defense=0.27  
 fall league = NPSL G13D2, NPSL Spr G13D2  
 alt names used:  
 Seattle United NE G00 White  
 Seattle Utd NE G00 White  
 Seattle United NE White [G00]  
 2013 Seattle United NE G00 White

Venues played:  
 Shoreline Classic GU12-13 Silver  
 Seattle Cup GU13  
 Marysville Strawberry Classic GU13  
 NPSL G13D2  
 Founders Cup G00  
 NPSL Spr G13D2



**Seattle United NE White G00**  
 Dots are actual minus expected GF (blue circles) and GA (red triangles).  
 Blue line is smoothed change in attack strength. Red is smoothed change in defense strength.



	date	home		away		venue	pred.home	pred.away
11722	2014-03-29	Seattle United W Blue G00	0	Seattle United NE White G00	0	NPSL Spr G13D2	2.55	1.00
11684	2014-03-22	Seattle United NE White G00	1	Seattle United Shoreline White G00	2	NPSL Spr G13D2	1.07	2.59
11597	2014-03-15	NW United Lecca G00	1	Seattle United NE White G00	2	NPSL Spr G13D2	0.70	3.34
11508	2014-03-08	Seattle United Shoreline White G00	6	Seattle United NE White G00	1	NPSL Spr G13D2	2.59	1.07
11418	2014-03-01	Seattle United NE White G00	2	NW United Lecca G00	1	NPSL Spr G13D2	3.34	0.70
11339	2014-02-22	Seattle United NE White G00	0	Seattle United W Blue G00	1	NPSL Spr G13D2	1.00	2.55
11114	2014-01-18	Seattle United NE White G00	0	Crossfire Select Habash G00	7	Founders Cup G00	0.47	3.05
11080	2014-01-11	FC Salmon Creek Nemesis Real Yellow G00	6	Seattle United NE White G00	0	Founders Cup G00	2.21	1.06
11056	2014-01-04	Seattle United NE White G00	0	Kent United Green G00	6	Founders Cup G00	0.38	5.67
10886	2013-11-23	ISC Arsenal Red G00	1	Seattle United NE White G00	3	NPSL G13D2	0.91	2.18
10787	2013-11-16	NSC Fusion G00	5	Seattle United NE White G00	0	NPSL G13D2	4.82	0.51
10681	2013-11-09	Seattle United NE White G00	0	Seattle United Shoreline White G00	6	NPSL G13D2	1.07	2.59
10532	2013-11-02	NW United Lecca G00	0	Seattle United NE White G00	5	NPSL G13D2	0.70	3.34
10375	2013-10-26	Crossfire Select Jordan G00	1	Seattle United NE White G00	1	NPSL G13D2	0.74	1.58
10226	2013-10-19	Seattle United NE White G00	1	BYSC Select Ataee G00	0	NPSL G13D2	2.61	0.87
10037	2013-10-12	Seattle United NE White G00	0	Whatcom FC Rangers White G00	3	NPSL G13D2	0.58	3.39
9849	2013-10-05	Seattle United NE White G00	3	Seattle United Shoreline White G00	3	NPSL G13D2	1.07	2.59
9676	2013-09-28	Seattle United NE White G00	2	ISC Arsenal Red G00	0	NPSL G13D2	2.18	0.91
9525	2013-09-21	Seattle United NE White G00	1	NSC Fusion G00	6	NPSL G13D2	0.51	4.82
9364	2013-09-14	NSC Spirit G00	1	Seattle United NE White G00	0	NPSL G13D2	3.38	0.55
9200	2013-09-07	Seattle United W Blue G00	2	Seattle United NE White G00	0	NPSL G13D2	2.55	1.00
8649	2013-08-04	Cascade FC White G00	1	Seattle United NE White G00	2	Marysville Strawberry Classic GU13	1.28	1.39
8600	2013-08-03	Seattle United NE White G00	5	FC Edmonds Crew G00	0	Marysville Strawberry Classic GU13	0.54	4.83
8566	2013-08-02	Seattle United NE White G00	0	NSC Fusion G00	6	Marysville Strawberry Classic GU13	0.51	4.82
8295	2013-07-13	Seattle United NE White G00	0	Breakers Brock G00	2	Seattle Cup GU13	0.38	3.77
8303	2013-07-13	CYSA Timber Barons Green G00	5	Seattle United NE White G00	2	Seattle Cup GU13	4.99	0.36
8255	2013-07-12	Seattle United NE White G00	2	PS Slammers Black G00	3	Seattle Cup GU13	0.69	4.94
7960	2013-06-15	Seattle United NE White G00	0	Seattle United S Black G01	2	Shoreline Classic GU12-13 Silver	1.51	0.98

	<b>date</b>	<b>home</b>		<b>away</b>		<b>venue</b>	<b>pred.home</b>	<b>pred.away</b>
7963	2013-06-15	Seattle United NE Blue G01	0	Seattle United NE White G00	6	Shoreline Classic GU12-13 Silver	0.87	3.13
7931	2013-06-14	MIFC Maroon G00	5	Seattle United NE White G00	0	Shoreline Classic GU12-13 Silver	4.64	0.61